

Type H

Vacuum Cleaners

- GB** Operating Instructions
- D** Bedienungsanweisungen
- F** Mode d'emploi
- NL** Gebruiksaanwijzing

IMPORTANT USER INFORMATION

It is most important that this instruction book should be retained with the appliance for future reference. Should the appliance be sold or transferred to another user, always ensure that the book is supplied with the appliance in order that the new user can be acquainted with the functioning of the appliance and the relevant warnings. These warnings are provided in the interest of safety. You must read them carefully before installing or using the appliance.

This appliance is designed to be operated only by adults.

It is dangerous to alter the specification or modify the product in any way.

WARNING/CAUTION

Prior to using this Type H vacuum cleaner a risk assessment must be carried out by a qualified person to ensure that it is suitable for the application.

Do not remove this Type H vacuum cleaner from a contaminated area unless it has been decontaminated in accordance with the "Decontamination" section later in this book.

This machine is for dry use only and shall not be used or stored outdoors in wet conditions.

This machine is also suitable for commercial use, for example in hotels, schools, hospitals, factories, shops and offices for other than normal housekeeping purposes.

If the supply cord is damaged, it must be replaced by a special cord or assembly available from or our service agent.

Do not use the appliance in the presence of flammable gases.

This appliance is not suitable for collecting radioactive dust.

Never leave the appliance running unattended.

Remove the plug from the wall socket before attempting any form of user maintenance specified in this instruction book.

Do not carry or drag your Vacuum Cleaner by the mains supply cable.

Do not tug at the mains supply cable to remove the plug from the wall socket.

Keep the mains supply cable away from heat, oil, sharp edges and rough surfaces.

Always ensure that the cable is not damaged in any way.

Never pick up hot cinders or lighted cigarette ends.

Dust bags and filters should be changed at regular intervals as stated in this instruction book.

Do not use the appliance to suck up liquids or use on wet surfaces.

Do not use the appliance for dry vacuuming with the filters removed.

When fitting and changing the accessories always follow the instructions in this instruction book.

Under no circumstances should you attempt to repair the appliance yourself. Repairs undertaken by unauthorised or inexperienced persons may cause injury and/or serious malfunctioning.

This appliance should be serviced by authorised personnel and only genuine spare parts should be used.

Always replace the dustbag when full ensuring that the cloth filter is not blocked with dust.

Never use the appliance without the full filtration system fitted.

ELECTRICAL INFORMATION

This appliance has been designed for dry vacuum cleaning only and must not be used to pick up any liquids.

declines any liability should this or any of the following measures not be observed.

Cable & Plug

This Vacuum Cleaner is an earthed appliance and has 10 metres of 3-core flex with a moulded on impact resistant 13amp 3 pin plug (to BS 1363A). The fuse fitted (ASTA Approved) is rated at 13amps. Only 13amps fuses must be used (*Not applicable to 110V models – these are fitted with a yellow 16 amp 3-pin plug suitable for 110V*).

Should the moulded on plug be damaged please follow this procedure:

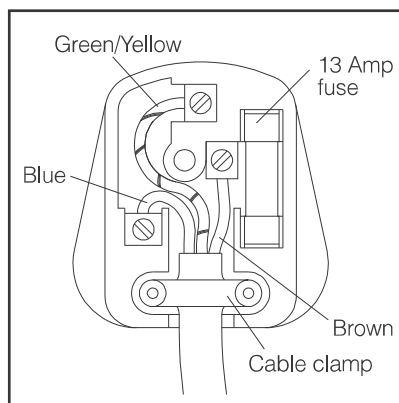
Switch off supply at socket, remove damaged plug from socket, cut plug off from flex.

Make sure the damaged plug is disposed of immediately so as there is no chance of the damaged plug being used.

Fitting a Replacement Plug

Use only a 13amp (BEAB approved) plug. To fit proceed as follows:

- 1) Ensure that the lengths of wire to be fitted inside the plug have been cut to the correct length and the end correctly prepared. When preparing the cable ends take care not to damage the out sheath, or the insulation surrounding the inner conductors.
- 2) Connect the blue (NEUTRAL) wire to the terminal in the plug which is marked with the letter “N” or coloured black.
- 3) Connect the brown (LIVE) wire to the terminal in the plug which is marked with the letter “L” or coloured red.
- 4) Connect the green/yellow (EARTH) wire to the terminal in the plug which is marked with the letter “E” or coloured green.
- 5) Tighten all screws. Ensure that all conductor strands have entered into the terminal posts and that the mains lead is securely held in place by the cable clamp.
- 6) Ensure that the plug is fitted with a 13amp ASTA approved BS 1362 fuse. Replace the top cover of the plug and secure.



Extension Cable

If using an extension cable at any time, always ensure that the insulation sheath is in good condition and is not damaged in any way. Make sure that the socket is fitted to the extension cable correctly, if in doubt have it checked by a qualified electrician. Always use the extension cable in accordance with the manufacturers instructions.

UNPACKING YOUR CLEANER

Unpack your cleaner and ensure that you have a complete set of accessories as listed below:

- | | |
|---|---|
| 1 | 32mm Hose and Toolkit (KV10H, 15H & 18H) |
| 5 | K1 Disposable Microfibre Bags (KV10H & 15H) |
| 5 | K4 Disposable Microfibre Bags (KV18H, 20H, 25H, 30H, 45H & 50H) |
| 1 | High Efficiency (H.E.) Filter Assembly |

HOSE AND ACCESSORIES

Supplied separately to customer requirements / Dealer requirements (except KV10H, 15H & 18H)

We recommend 32mm or 38mm hose and tools for single motor models (KV20H, 25H, 30H, 45H & 50H).

For twin motor models (KV20H, 25H, 30H, 45H & 50H) we recommend 38mm hose and tools.

RISK ASSESSMENT Type H

If this vacuum cleaner is used for collecting dust and debris which may be hazardous to health if inhaled, ingested or in contact with the skin then a risk assessment must be carried out by a competent person to verify the suitability of the application.

The risk assessment will be the responsibility of the customer/end user and should take into account but not limited to the characteristics of the material being collected such as:

1. The occupational exposure limit of the dust and debris being collected.
2. The particle size of the dust and debris being collected.
3. The method of disposal.

OPERATING INSTRUCTIONS

WARNING

Before use, operators must be provided with information, instruction and training for the use of the appliance and the substances for which it is to be used, including the safe method of removal and disposal of the material collected.

1. Connection to the Electricity Supply

Insert the mains plug into a suitable socket outlet. When you have finished cleaning, unplug the appliance. When coiling the mains cable make sure that any twists or knots in the cable come out at the plug end. DO NOT coil cable from the plug end as all twists and knots remain in the cable and considerably shorten its life.

2. Cleaner Controls

The following control is provided:

The on/off switch is situated on the top of the motor head. To switch the appliance on firmly press the part of the switch marked "1". To switch off press the part of the switch marked "0".

3. Carrying and Storing

The assembled cleaner should only be moved by the carrying handle on top of the motor head. Do not attempt to lift or drag the machine by the mains lead. The cleaner must be stored indoors and in a dry environment.

FILTRATION SYSTEM

This is a Type H Vacuum Cleaner. It is fitted with 3 stages of filtration on the negative pressure side of the motor (that is before the motor, so that the motor always receives clean filtered air).

- 1st Stage:** **K1 Disposable Microfibre Bag** – KV10H & KV15H
 K4 Disposable Microfibre Bag – KV18H, 20H, 25H, 30H, 45H & 50H
- 2nd Stage:** **High Efficiency Filter Assembly** specially for Type H cartridges
- 3rd Stage:** **Type H (HEPA) Cartridge Filter** (also known as the Absolute or Essential Filter)

Access to the Microfibre Bag and Filtration System

- a) To remove the motor head and HEPA cartridge unit, unclip the LOWER set of toggle clips. Ensure that the toggle clips are hinged clear of the rim of the HEPA unit. Lift the motor head and HEPA unit clear of the canister.
- b) To refit the motor head and HEPA unit, align the head so that the cable entry lies directly opposite the hose entry on the canister. Locate the toggle clips over the rim of the HEPA unit and firmly press down both toggle clips until they have locked into position.

Note: The upper set of toggle clips between the HEPA unit and motor head have a lock-down device to prevent the separation of the motor head from the HEPA unit. Only authorised and trained personnel should separate the motor head from the HEPA unit.

WARNING

The appliance may contain dust hazardous to health. Emptying and maintenance operations including removal and renewal of dust collection bag shall only be carried out by authorised personnel wearing suitable approved personal protection.

WARNING

Do not use the appliance unless the full filtration system is fitted – Type H cartridge, high efficiency cloth filter and Microfibre bag. Failure to fit the complete system may cause premature clogging of the Type H cartridge and may also endanger health.

WARNING

Do not use this appliance for the collection of explosive dusts.

Do not use this appliance in a corrosive or flammable environment.

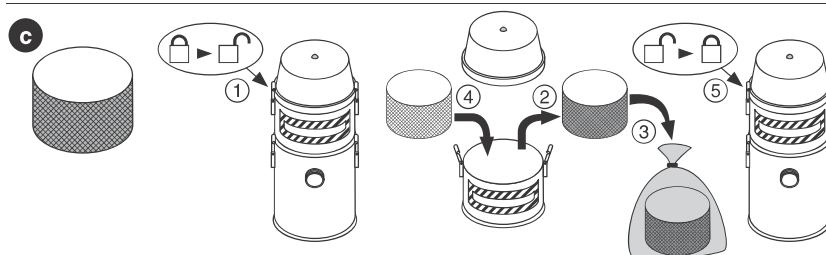
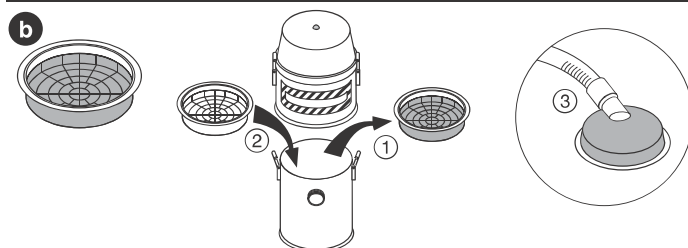
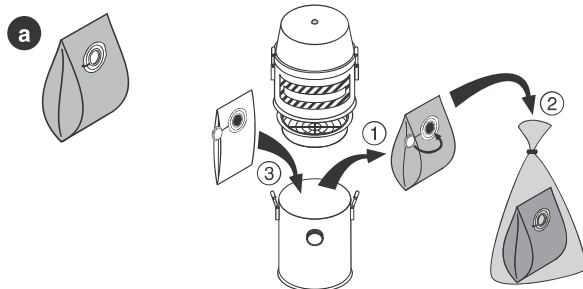
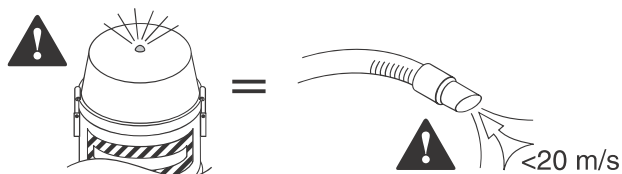
IMPORTANT

The vacuum unit is designed to collect hazardous dusts: Therefore any dust found within the machine or on its filters may be dangerous to your health. Always take precautions.

YELLOW FLASHING WARNING LIGHT

This model is fitted with a yellow flashing LED warning light. When this light is flashing the airspeed in the hose has dropped below 20 metres per second. This would indicate that there is an impediment to the airflow.

1. Remove hose. If LED stops flashing, the hose is blocked. Unblock the hose and try again.
2. If LED flashes with no hose connected, there is a restriction in the air filtration system. Using the following sequence, check, replace or clean the following:
 - a) Disposable Microfibre bag
 - b) High Efficiency Cloth filter assembly
 - c) HEPA Cartridge filter (also known as the absolute or essential filter)



DUST/DEBRIS DISPOSAL

This appliance contains dust hazardous to health. Emptying and maintenance operations, including removal and renewal of dust collection bag, must only be carried out by authorised personnel wearing suitable personal protection. Do not operate without the full filtration system fitted.

Disconnect the hose, fit the blanking cap on the hose entry, unlatch the toggle clips and remove the motor head/HEPA unit. Take care not to drop the motor head/HEPA unit. Remove the filter assembly and carefully release the disposable bag from the bag tube and lift out of the canister. Seal the disposable bag inlet using the integral cap on the bag collar. The disposable bag should be immediately placed in a suitably labelled impervious plastic bag and this bag sealed and disposed of in accordance with the current regulations. Fit new disposable bag over the bag tube inside the canister.

This vacuum cleaner is supplied with 5 spare Microfibre bags and a spare filter assembly. This (clean) spare filter should be used and the motor head/HEPA unit refitted.

The contaminated filter should now be cleaned by vacuuming and stored in a labelled plastic bag ready for future use.

DECONTAMINATION

Decontamination operations should only be carried out by competent authorised personnel equipped with suitable personal protection.

Before removing the accessories/vacuum cleaner from the contaminated area:

- Accessories should be cleaned externally with a Type H vacuum cleaner.
- They should then be cleaned with an adhesive wipe, sealed at each end and sealed in a clear impervious bag. The bag should carry an appropriate warning label.
- The external surfaces of the bag should then be cleaned with an adhesive wipe.
- The vacuum cleaner should be cleaned externally with itself. The disposable bag and its contents should be removed and disposed of in accordance with the method described in the section titled Dust/Debris Disposal.
- The vacuum cleaner should then be cleaned externally with an adhesive wipe.
- The vacuum cleaner should be sealed in a clear impervious bag. The bag should carry an appropriate warning label.
- The external surfaces of the bag should then be cleaned with an adhesive wipe.

MAINTENANCE

Maintenance must be carried out in a suitable controlled area with local filtered exhaust ventilation and facilities for cleaning the area after servicing.

During maintenance always disconnect from the electrical supply.

Maintenance and cleaning must only be carried out by competent authorised personnel equipped with suitable personal protection. All parts must be regarded as contaminated and treated as such and, therefore, another Type H vacuum cleaner should be used to clean each removable component prior to removal.

Items that cannot be satisfactorily cleaned are to be disposed of in impervious plastic bags in accordance with current regulations. All surfaces should be cleaned as they become exposed.

THERMAL CUTOUT SWITCH

This vacuum cleaner is fitted with a thermal switch which automatically stops the motor if it overheats. This may be caused by a blocked hose or wands, a full Microfibre bag, or a blocked filter. If your vacuum cleaner cuts out check for the above. The thermal switch will automatically reset itself when the motor temperature drops.

SERVICING & SPARES

Should your **VACUUM CLEANER** need any servicing, repair or spares please contact your nearest dealer.

Please make a note of the model and serial number before contacting your dealer.

Before attempting any servicing of this appliance, decontaminate as described above and make sure you are protected from any dust which may still be present on or around the machine or any dust which may have collected on internal components.

The Type H cartridge filter is not reusable or cleanable and should be disposed of safely. When it becomes excessively clogged and the vacuum performance of the appliance suffers or is no longer acceptable fit a new unit. Be careful when handling and fitting Type H cartridges as damage to the pleated element will affect the performance and may cause a leakage through the filter of unfiltered air.

GUARANTEE

products are guaranteed for 12 months against defective parts and workmanship. There are certain conditions that may invalidate this guarantee.

- a) This appliance must be correctly installed and used in accordance with these instructions.
- b) Servicing must be carried out by authorised personnel only.
- c) The guarantee may be invalidated by unauthorised repair or modification to the appliance.

may introduce modifications to their products from time to time and consequently the details given in this instruction book are subject to alteration without notice.

Protecting the environment



When this product has reached the end of its useful life it must be recycled in an environmentally friendly manner.

CAUTION: This Type H Vacuum Cleaner is likely to contain or be contaminated with dust hazardous to health. It must be thoroughly decontaminated in accordance with best practice before recycling.