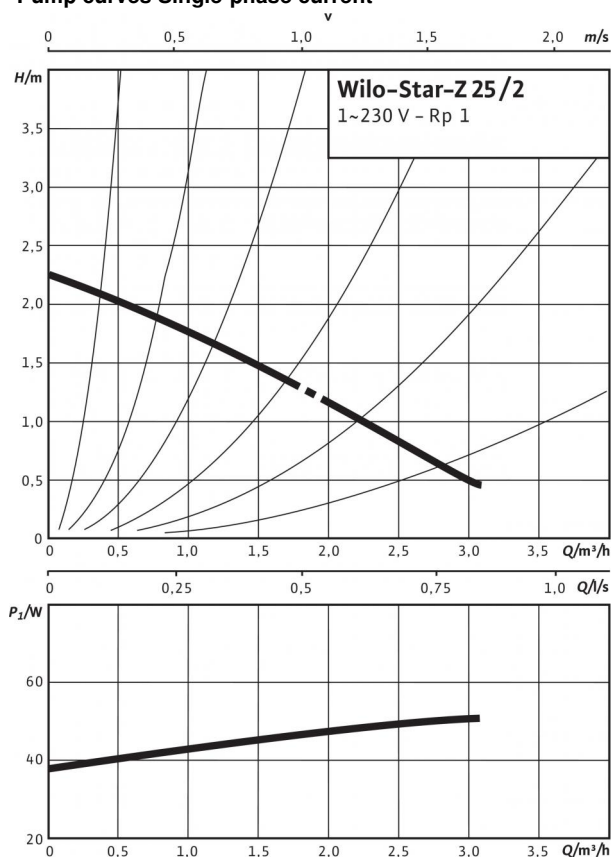
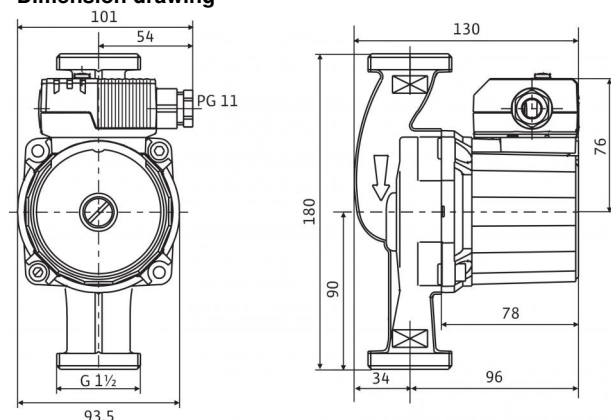


# Data sheet: Star-Z 25/2 EM

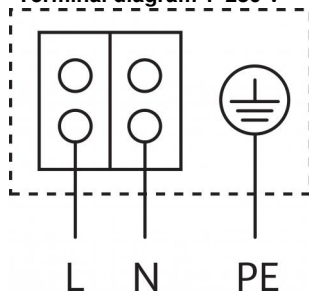
## Pump curves Single-phase current



## Dimension drawing



## Terminal diagram 1~230 V



Blocking current-proof motor  
Single-phase motor (EM) 2-pole - 1~230 V, 50 Hz  
With built-in capacitor

## Approved fluids (other fluids on request)

Drinking water and water for food-processing companies in accordance with TrinkwV 2001 (drinking water ordinance)

## Permitted field of application

Temperature range for applications in domestic hot water circulation systems at maximum ambient temperature of +40 °C

Temperature range for applications in domestic hot water circulation systems at max. ambient temperature of +40 °C in short-time duty 2 h T

Max. permitted total hardness in domestic hot water circulation systems

Maximum permissible operating pressure  $P_{max}$

+2 ... +65 °C

70 °C

3.21 mmol/l (18 °dH)

10 bar

## Pipe connections

Threaded pipe union

Thread

Overall length  $L_0$

Rp 1

G 1 1/2

180 mm

## Motor/electronics

Emitted interference

Interference resistance

Protection class

Insulation class

Mains connection

Speed  $n$

Power consumption  $P_1$

Current consumption  $I$

Motor protection

Threaded cable connection PG

EN 61000-6-3

EN 61000-6-2

IP 44

F

1~230 V, 50 Hz

2700 rpm

max. 46 W

max. 0.22 A

Not required (blocking-current proof)

1x11

## Materials

Pump housing

Impeller

Pump shaft

Bearing

Red brass (CC 499K) according to DIN 50930-6 in accordance with Drinking Water Ordinance

Plastic (PPO)

Oxide ceramic, brown (Al2O3)

Carbon, synthetic resin impregnated

## Minimum suction head at suction port for avoiding cavitation at water pumping temperature

Minimum suction head at 40 / 65 / 110 °C

0.5 / 3 / 10 m

## Information for order placements

Make

Type

Art no.

Weight approx.  $m$

Wilo

Star-Z 25/2 EM

4029062

2.44 kg

# Dimensions and dimensions drawings: Star-Z 25/2 EM

Dimension drawing

