

# The Chimney Fans "Injekt"

- RS 180** (stainless steel black powder-coated)
- RS 180 ES** (stainless steel bare metal)
- RS 180 ESP** (stainless steel electro-polished)
- RS 225 ES** (stainless steel bare metal)
- RS 225 ESP** (stainless steel electro-polished)



## INSTALLATION INSTRUCTIONS



This product is in line with the requirements of the relevant EU guidelines. The declaration of conformity can be obtained at the address given on the back

Test certificate BAY 16 Prüf-Nr. P-BAY09-031



### Safety Advice

After installation, chimney fans are an integral part of the flue gas system of the fireplace (such as boilers, tiled stoves, wood-burning stoves and individual stoves) and affect these directly. Therefore, you should inform your responsible building control before installing them. The chimney fan supports the operation of the flue gas system and the design of the flue gas system has to comply with EN 13384 T 1 / T 2.

A smooth operation is only guaranteed if the following instructions are followed.

EN DIN 18 160 T 1

(construction standards for flue gas systems)

EN 13384 T 1 (formerly DIN 4705 T 1)

Calculation of flue gas systems

EN 13384 T 2 (formerly DIN 4705 T 3)

Calculation of flue gas systems with multi-configuration  
(only for oil and gas fireplaces with certified control systems)

**Current laws, guidelines and standards have to be followed for installation.**

The chimney fan "Injekt" is exclusively made for installation on top of the outlet of the flue gas system above the roof or on the outlet of a stainless steel chimney. Structural requirements have to be considered and a safe fastening ensured.

When burning out the chimney (**Warning:** In some countries - for example the UK - it is not allowed to burn out the chimney, please contact your authorities to find out if you allowed to do so).

The chimney fan has to be removed before burning out the chimney.

### Range of Use

Mainly for solid fuels (heaters, tiled stoves, open fireplaces etc.) single and multi-configuration. Single, multi and mixed configuration for oil and gas stoves only with control system.



Technical Data	RS 180	RS 225
Max. delivery pressure*	approx. 50 Pa	approx. 80 Pa
Max. output*	approx. 750 m³/h	approx. 1000 m³/h
Fan capacity	170 W	270 W
Current drain	0,75 A	1,3 A
Bearings dimensions		
(hexagonal)	see Page 4	
Height	see Page 4	
Weight (total)	ca. 8,0 kg	ca. 12,0 kg
Material	stainless steel 1.4404 or 1.4571	
* Please note characteristic line on page 4		



### Installation

#### a. Fastening to the Chimney Cowl

The chimney fan is fastened to the chimney cover with the base plate.

A **soft, tight** layer has to be put between the base plate and the chimney cover (e.g. temperature-resistant silicone, ceramic fibre, etc.) to:

- ensure an even positioning
- keep out precipitation
- prevent vacuum exhaust or leak air.

The fastening has to be stable enough to withstand wind. The chimney cover has to be attached firmly to the chimney or have enough net weight to hold the chimney fan safely (if necessary, attach the cover to the chimney separately).

#### Mounting the Chimney Fan on the Cowl

- Make sure that the foundation (e.g. base plate) is intact and statically stable to ensure a safe installation of the chimney fan. It has to withstand wind.

- RS 180 usable up to NW 200 or cross-section 200x200 (needs to be certified according to EN 13384)
- RS 225 usable up to NW 250 or cross-section 250x250 (needs to be certified according to EN 1338)
- If the cross-section is larger, use an conversion adapter.
- Place the chimney fan centrically on the opening of the chimney's inner pipe and mark dowel drills.
- Drill holes for approved dowels 8 mm Ø and place dowels.
- Attach an elastic ground (e.g. temperature-resistant [at least 200 °C] silicone) to the base plate of the chimney fan.
- The chimney fan has to be connected tightly with inner flue gas pipe (in case of a multi-shell flue gas system).
- The linear extension of the flue gas system has to be considered. Please see the documentation of the manufacturer. If necessary, extra measures need to be taken based on its requirements and the conditions on-site. Due of the great variety of flue gas systems it is not possible to give universal solutions here.
- If the flue gas system has a rear ventilation, its outlet has to remain unblocked. Measures need to be taken depending on the conditions on-site. Because of the great variety of flue gas systems, it is not possible to give universal solutions here.
- Place the chimney fan on top and fasten it with stainless screws.
- The chimney fan does not need to be removed, except for repairing or burning out the chimney.
- Therefore, if there is sheet metal at the chimney outlet please use screws and **not rivets**.
- Please make sure that during operation the chimney fan does not aspirate leak air from outside through its bearing or untight spots at the base plate = **power loss**.

#### b. Fastening on a Stainless Steel Flue System

The chimney fan can also be mounted on a double-walled stainless steel chimney with an adapter. For this you may order (optional) the adapter RSG.../... (Ø insertion pipe of adapter = nominal diameter - 2 mm). Fitting adapters especially for Raab flue gas systems or separate chimney fan base plates for attachment on-site on request. The fastening depends on the installation criteria of the flue gas system's manufacturer. The structural analysis has to be done on-site.



### Start-Up

Check chimney fan compressor.  
Check speed actuator (minimum and maximum rotation speed).

Check negative pressure at fireplace.

Check circuit breaker (on-site).

Check grounding.

Start up fireplace and check overall operation.

**Switch on chimney fan before lighting the fire.**



### Cleaning / Maintenance

**The chimney fan "Injekt" is mostly maintenance-free.**

The pressure chamber can be made accessible if it should become dirty. For this, remove the wing nuts from the side of the casing facing away from the fan and remove the inspection cover. After cleaning the pressure chamber, the base of the inspection cover and casing should also be cleaned. Put the inspection cover back and tighten the wing nuts.



### Warning!

**Interrupt power supply before starting maintenance!**

### Electric Installation

For electric installation, please follow your local laws concerning the relevant supply area, guidelines and standards (also concerning lightning protection) as well as the adjoining wiring scheme. The electric wiring should be done by a specialised professional. The electric contact between the connection box and the chimney fan is completely wired. The system should be switched to zero-potential during installation.

Power supply 230V AC

Fuse protection 10 A

If the chimney fan is connected to the circuit through a fixed installation on-site, it is necessary to use a circuit breaker (as described below) in this fixed installation. We suggest the following cable qualities: e.g. NYM 3 x 1.5 mm<sup>2</sup>

#### 1) Chimney fan "Injekt" with ready-made compressor.

Installation has to be done by a specialised professional based on these installation instructions and that of the flue gas system. Lightning protection has to follow the relevant standards, laws and guidelines.

**2) Conduit box** (IP 65, included) with internal capacitor for compressor

**3) The service switch or circuit breaker** (on-site) makes it possible to cut the chimney fan from power on the roof for cleaning. This switch should always be installed if there is no other safe way to interrupt the power supply. Installation where it is accessible for cleaning (e.g. at cowl or upper part of cleaning port).

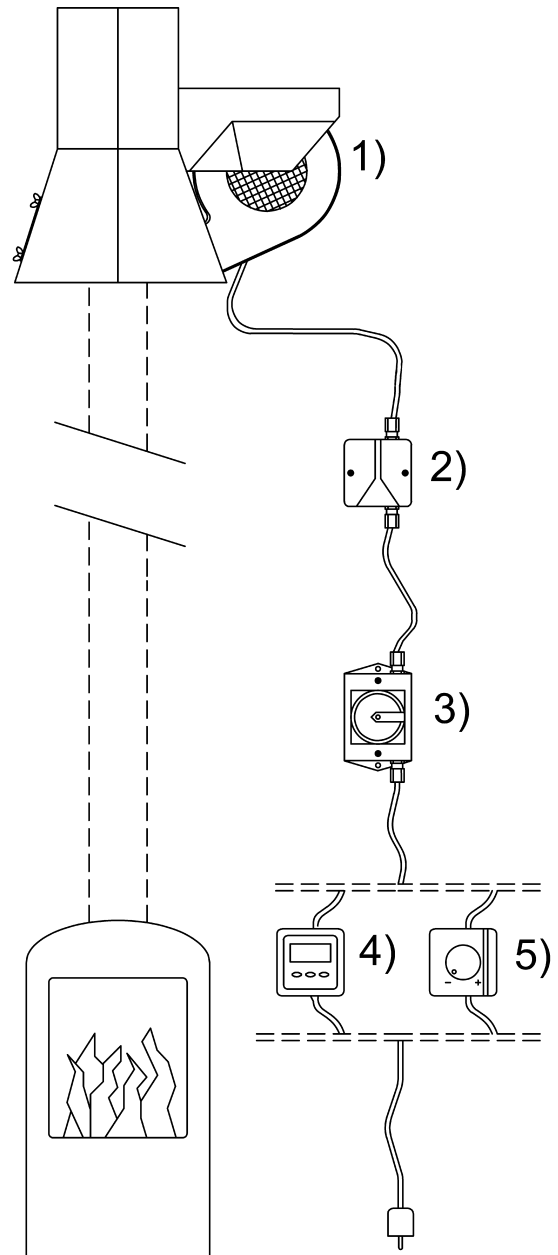
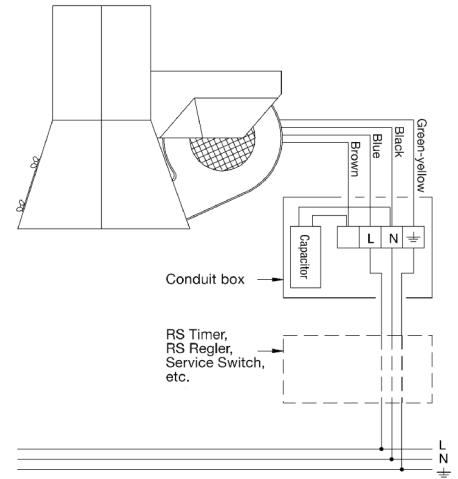
**4) With the „RS Timer“** (optional) the chimney fan can be switched on for any period of time (from 1 second to 10 hours) – e.g. during the heating up of wood-burning stoves. When the countdown expires the chimney fan is switched off again. Additionally, the RS Timer can be used as a normal on/off switch. It can be used for solid fuel stoves, open fireplaces, wood-burning stoves, tiled stoves, etc.

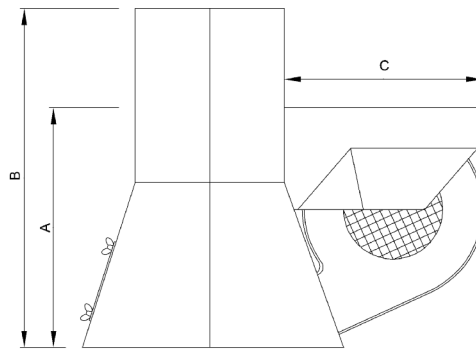
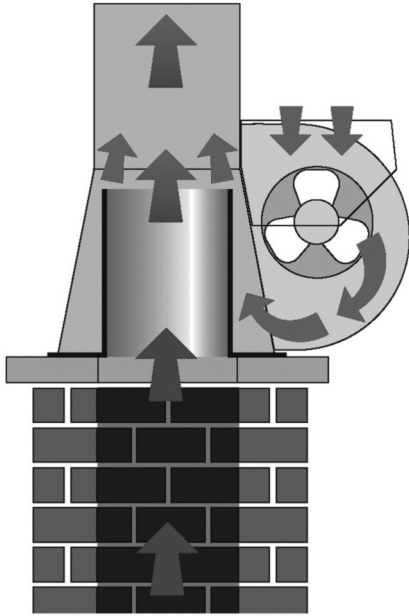
**5) The „RS Regler“** (optional) is used for setting the throughput manually and steplessly. Due to this, it is possible to regulate combustion (of solid fuels) and the safe evacuation of flue gasses from the fireplace as necessary. It can be used for solid fuel stoves, open fireplaces, wood stoves, tiled stoves, etc.

#### Dealing with Malfunctions

In case of a malfunction, cut the system from power and contact a specialised professional.

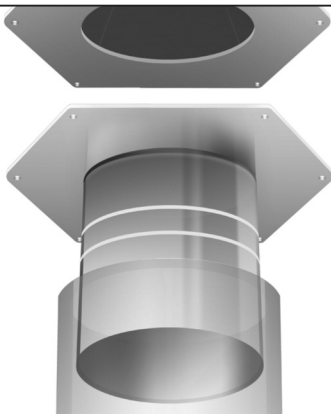
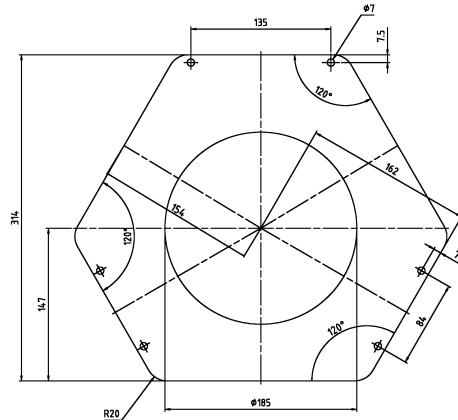
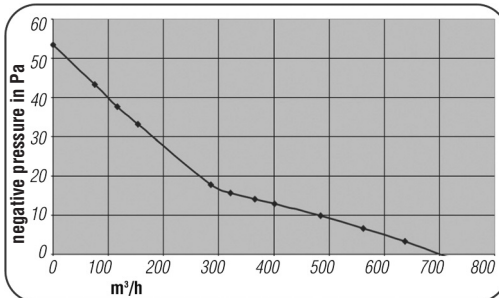
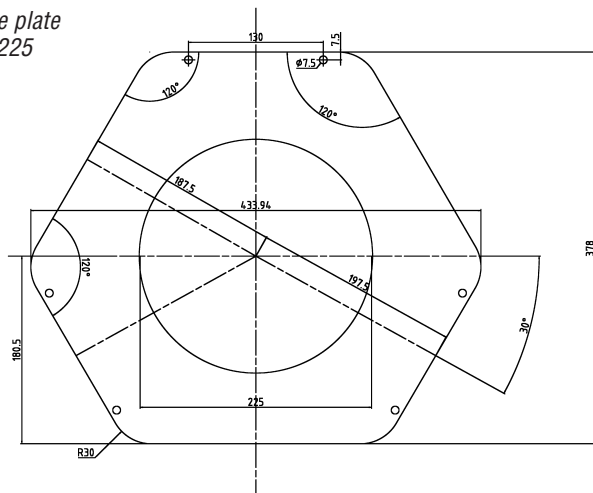
**When installing a manually operated chimney fan (with speed controller) we suggest to also use a draught regulator (Z 150 S) to ensure the draught requirement of the fireplace remains constant.**



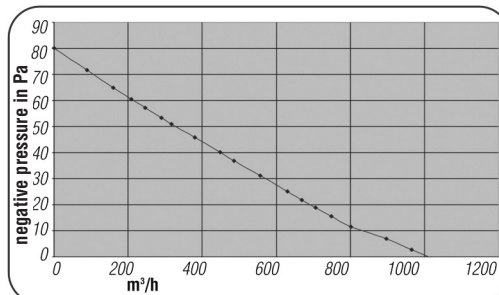


Measures	RS 180 ... approx.:	RS 225 ... approx.:
A:	290 mm	350 mm
B:	410 mm	610 mm
C:	240 mm	260 mm

Dimensions

Adapter  
RSG.../...Base plate  
RS 180Base plate  
RS 225

KW chimney fan RS 180



KW chimney fan RS 225

**KW**  
KUTZNER + WEBER

Kutzner + Weber GmbH  
Frauenstrasse 32  
D-82216 Maisach  
Tel.: +49 (0) 81 41 / 9 57-0  
Fax: +49 (0) 81 41 / 9 57-5 00  
www.kutzner-weber.de  
info@kutzner-weber.de

Telephon Support + 49(0) 81 41 / 95 74 00

*Innovation—Environment—People*