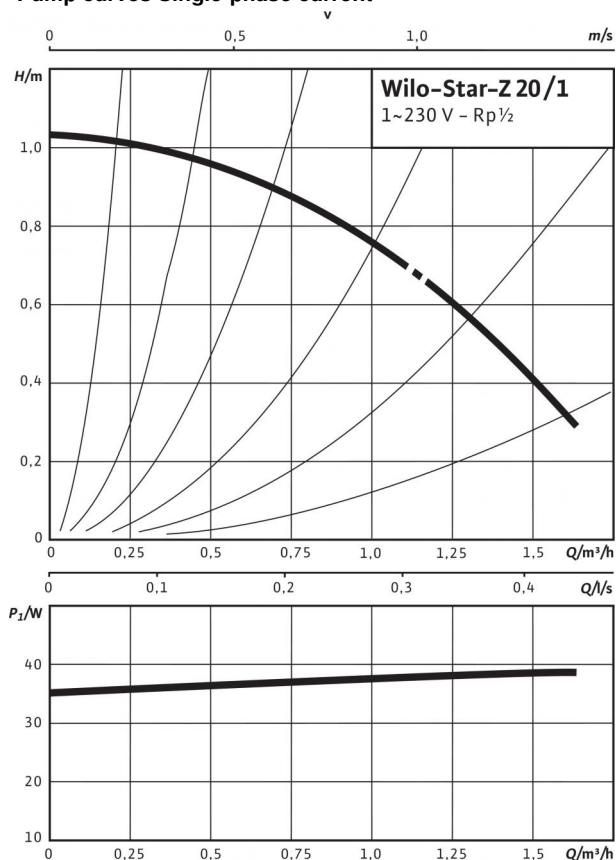
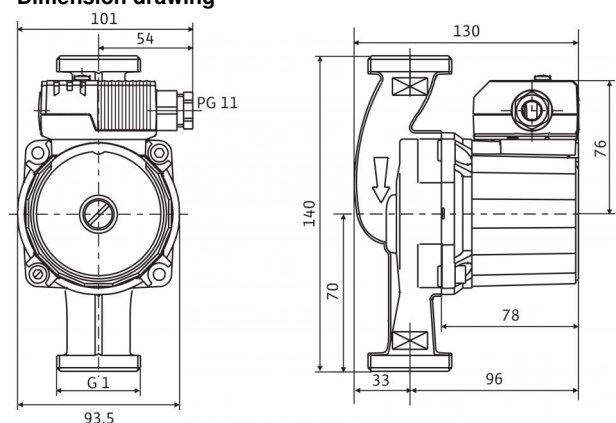


Data sheet: Star-Z 20/1

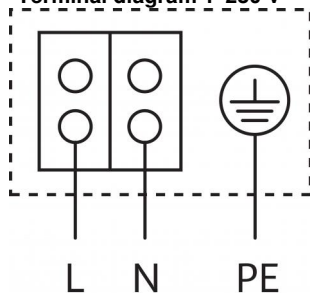
Pump curves Single-phase current



Dimension drawing



Terminal diagram 1~230 V



Blocking current-proof motor
Single-phase motor (EM) 2-pole - 1~230 V, 50 Hz
With built-in capacitor

Approved fluids (other fluids on request)

Drinking water and water for food-processing companies in accordance with TrinkwV 2001 (drinking water ordinance)

Permitted field of application

Temperature range for applications in domestic hot water circulation systems at maximum ambient temperature of +40 °C

Temperature range for applications in domestic hot water circulation systems at max. ambient temperature of +40 °C in short-time duty 2 h T

Max. permitted total hardness in domestic hot water circulation systems

Maximum permissible operating pressure P_{max}

+2 ... +65 °C

70 °C

3.21 mmol/l (18 °dH)

10 bar

Pipe connections

Threaded pipe union

Thread

Overall length L_0

Rp 1/2

G 1

140 mm

Motor/electronics

Emitted interference

Interference resistance

Protection class

Insulation class

Mains connection

Speed n

Power consumption P_1

Current consumption I

Motor protection

Threaded cable connection PG

EN 61000-6-3

EN 61000-6-2

IP 44

F

1~230 V, 50 Hz

2700 rpm

36 - 38 W

max. 0.18 A

Not required (blocking-current proof)

1x11

Materials

Pump housing

Impeller

Pump shaft

Bearing

Red brass (CC 499K) according to DIN 50930-6 in accordance with Drinking Water Ordinance

Plastic (PPO)

Oxide ceramic, brown (Al2O3)

Carbon, synthetic resin impregnated

Minimum suction head at suction port for avoiding cavitation at water pumping temperature

Minimum suction head at 40 / 65 / 110 °C

0.5 / 3 / 10 m

Information for order placements

Make

Type

Art no.

Weight approx. m

Wilo

Star-Z 20/1

4028111

2.24 kg

Dimensions and dimensions drawings: Star-Z 20/1

Dimension drawing

