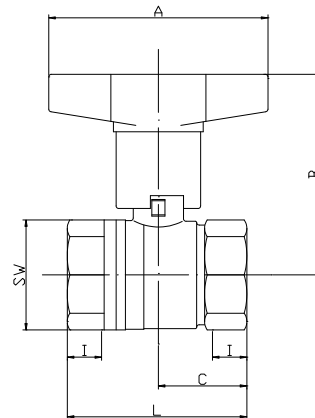


## DATA SHEET

### WESA item no.: 9370

#### Stainless steel ball valve

two-piece, standard modl, full bore,  
extended T-lever form aluminium, for better isolation,  
marking according to TÜV-guidlines,  
threads according DIN EN ISO 228/1



Materials:					Technical features:						
Body:		stainless steel 1.4408			Nominal pressure:			PN 40 according to size and temperature			
Ball:		stainless steel 1.4408									
Stem:		stainless steel 1.4401			Temperature:			-30°C up to max.+220°C according to pressure			
Lever:		extened aluminium T-lever, black coated									
Gaskets:					Threads:			female / female threads according DIN EN ISO 228/1			
Ball gasket:		PTFE									
Stem packing:		PTFE with packing gland			DIN-DVGW-permissance:			gas: - wasser: - drinking water -			
Application field:		Almost unlimited applicable for all liquid media, excluded hydrogen and nitrogen									
Inch:		3/8"	1/2"	3/4"	1"	1 1/4"	1 1/2"	2"			
Item-no.:		9370-03	9370-04	9370-05	9370-06	9370-07	9370-08	9370-09			
DN [mm]		10	15	20	25	32	40	50			
L [mm]		40	50	60	68	80	94	106			
PN [bar]		40	40	40	40	25	25	25			
A [mm]		80	80	80	80	120	120	120			
B [mm]		61,5	67,0	72,5	79,5	86,5	93,5	106,5			
C [mm]		20	25	30	34	40	47	53			
I [mm]		9,0	11,0	12,0	13,5	14,5	17,0	18,0			
SW [mm]		20	25	31	38	48	54	66			
Weight [g]		175	230	340	460	820	1190	2010			

Measure data as well as illustrations are noncommittal, we reserve themselves changes after the state of the art.

Stand:02/2011