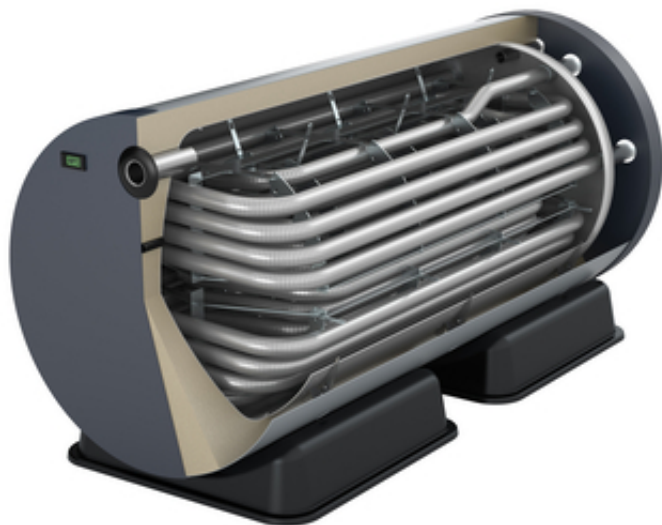


## Pure+ Horizontal Fresh-Water Storage Tank 150 litres 2 additional heat exchangers



Fulfill your customers' highest demands on the hygiene of drinking water and efficiency - with the horizontal OEG hygienic storage tanks!

The structure of these storage tanks is fundamentally different from usual large-volume domestic water tanks. A built-in corrugated stainless steel pipe separates the drinking water from the heating water and serves as a powerful heat exchanger at the same time. Thus, the advantages of a buffer tank are combined with those of a flow heater.

The drinking water flows through the corrugated stainless steel pipe in the water of the heated tank only if required. This leads to a very low energy consumption and you can guarantee your customers legionella-free drinking water. You will not need a legionella protection programme in the regulation. At all times, customers are provided with hygienically-clean, fresh water at the desired temperature.

The horizontal arrangement of these hygienic storage tanks is ideal for the use in places that must be ruled out for vertical tanks (e.g. below inclined walls and stairs). Thus, your customers can benefit from the advantages of a hygienic storage tank even if space is limited.

Just compare! By positioning the heat exchangers horizontally in these storage tanks, you provide your customers with advantages over other products on the market. An efficient thermal stratification is only achieved by horizontal installation of the heat exchangers. The generously dimensioned heat exchanger surfaces ensure another energetic advantage over other products available in the market.

Due to the two additional heat exchangers, you offer your customer the option to use more heat generators and to feed their energy into the hygienic storage tank.

### **Insulation:**

Firmly foamed A+ insulation

### **Tank made of S235JR steel:**

Maximum operating pressure: 3 bar

Maximum operating temperature: 95° C

### **DHW heat exchanger made of stainless steel 1.4404:**

Maximum operating pressure: 6 bar

Maximum operating temperature: 95° C

### **Additional heat exchangers made of stainless steel 1.4404:**

Maximum operating pressure: 6 bar

Maximum operating temperature: 95°C

### **Note:**

An electric heating element is possible via an Rp 1½" connection.

# Pure+ Horizontal Fresh-Water Storage Tank

## 150 litres 2 additional heat exchangers



### Data pursuant to EU regulation 812/2013

Name of supplier's trade marks:	OEG GmbH
Model identification of the supplier:	516006376 - Horizontal Fresh-Water Storage Tank 150 litres 2 additional heat exchangers
Energy efficiency class of the model:	A+
Heat retaining losses in watts:	29
Storage tank volume in litres:	155

### General

OEG Nr.:	516006376
Rated volume according to EN 12897:	150
Colour:	silver
Insulation according to DIN 4102-1 Fire Protection Class B2:	solid foamed insulation
Weight [kg]:	90
Total height including insulation [mm]:	700
Width [mm]:	610
Length [mm]:	991

### Energy

Energy efficiency class according to EU regulation no. 812/2013:	A+
Heat retaining loss according to EN 12897 [W]:	29
Heat losses in stand-by mode according to DIN 12897 [kW/h / 24 h]:	0,696
Output capacity (45°C) [l]:	85
Performance indicator NL following DIN 4708:	1

### Tank

Real volume according to EN 12897 [l]:	155
$p_{\max}$ Tank [bar]:	3
$t_{\max}$ Tank [°C]:	95
$t_{\min}$ Tank [°C]:	20

### DHW heat exchanger

DHW heat exchanger area [m²]:	2,10
DHW heat exchanger volume [l]:	9,60
$p_{\max}$ DHW heat exchanger [bar]:	6
$t_{\max}$ DHW heat exchanger [°C]:	95
Zusatzwärmetauscher Fläche unten [m²]:	1,40
Zusatzwärmetauscher Fläche oben [m²]:	1,40
Zusatzwärmetauscher Volumen oben:	6,10
Zusatzwärmetauscher Volumen unten:	6,20

Pure+ Horizontal Fresh-Water Storage Tank  
150 litres 2 additional heat exchangers



Zusatzwärmetauscher

p <sub>max</sub> Zusatzwärmetauscher [bar]:	6
t <sub>max</sub> Zusatzwärmetauscher [°C]:	95

Connections

Connection layout:	front/rear
Connection sensor [Ø mm / terminal]:	6 mm
Connection cold / hot water:	Rp 1 1/4"
Connection heat generator [thread]:	R 1"
Connection heating element [thread]:	Rp 1 1/2"
Max. immersion depth of screw-in heater [mm]:	700