

## 6004 Joker S self-setting spanner, 10-13 x 154 mm

Tools for bicycles and e-bikes



<b>EAN:</b>	4013288211729	<b>Size:</b>	180x50x27 mm
<b>Part number:</b>	05020100001	<b>Weight:</b>	132 g
<b>Article number:</b>	6004 Joker S	<b>Country of origin:</b>	CZ
		<b>Customs tariff number:</b>	82041100

- The adjustable Joker 6004 covers all metric and imperial dimensions in the respective field of application
- Automatic and continuous grip of hexagon screws and bolts
- Lever mechanism when gripping avoids slipping and damage
- Fast and consistent screwdriving without removing the wrench thanks to mechanical ratchet function
- Back-pivoting angle of only 30° through placement in the corner-width rectangular prisms in the mouth

Many users wish to have a universal screwdriving tool with the widest possible range of applications. It should be a single tool for multiple metric and imperial dimensions. It should automatically adjust to the different screw sizes. It should be safe to grab without damaging anything and allow for a high working speed. The continuous and parallel jaws replace several single spanner dimensions. The required size is automatically and continuously set when attaching the tool to the hexagon bolt or screw. The integrated lever mechanism securely clamps the hexagon screw or bolt between the jaws, which significantly reduces the risk of slipping or damage. The ratchet function ensures fast and consistent screwdriving without removing the tool. Thanks to the corner-width rectangular prisms, a back-pivoting angle of only 30° can be realized. The single-arm design in conjunction with the ratchet function and the corner-width prism make it possible to work even in confined spaces. The adjustable Joker 6004 is the universal screwdriving tool. Self-setting. Gripping. Spanning.

### Web link

[https://products.wera.de/en/tools\\_for\\_bicycles\\_and\\_e-bikes\\_6004\\_joker\\_s.html](https://products.wera.de/en/tools_for_bicycles_and_e-bikes_6004_joker_s.html)

Wera - 6004 Joker S  
05020100001 - 4013288211729

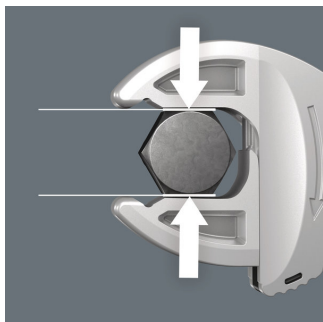
Wera Werkzeuge GmbH  
Korzerter Straße 21-25  
D-42349 Wuppertal  
Tel: +49 (0)2 02 / 40 45-0  
E-Mail: [info@wera.de](mailto:info@wera.de)

### Automatically and continuously self-setting



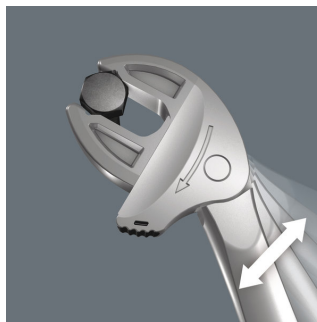
With its automatically and continuously gripping parallel jaws the Joker spanner 6004 covers all dimensions in the respective field of application. The tool automatically finds the required size when placed on the bolt or screw, no setting required.

### Gentle to the screw



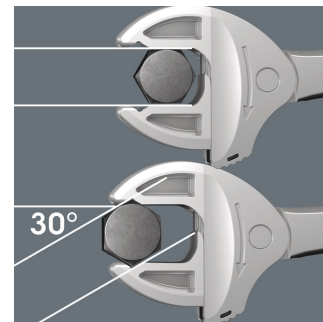
The parallel smooth jaws of the Joker 6004 allow surface pressure and can thus prevent rounding of the bolt or screw head, which can occur during power transmission on corners.

### Ratchet mechanism for fast work



The ratchet function in the mouth sees to fast and consistent screwdriving without removing the tool.

### Low back-pivoting angle





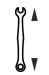

Thanks to the corner-width rectangular prisms, a back-pivoting angle of only 30° can be realized.

### Useful hole for hanging



Thanks to its hole the Joker can be neatly hung on the workshop wall.

### Further versions in this product family:

				
	mm		mm	mm
05020100001	10-13	7/16"-1/2"	154	10

### Web link

[https://products.wera.de/en/tools\\_for\\_bicycles\\_and\\_e-bikes\\_6004\\_joker\\_s.html](https://products.wera.de/en/tools_for_bicycles_and_e-bikes_6004_joker_s.html)

Wera - 6004 Joker S  
05020100001 - 4013288211729

Wera Werkzeuge GmbH  
Korzerter Straße 21-25  
D-42349 Wuppertal  
Tel: +49 (0)2 02 / 40 45-0  
E-Mail: [info@wera.de](mailto:info@wera.de)