

# Brass filter

Body: from 1/4" up to 1" in hot pressed brass

from 1 1/4" up to 4" in casting brass

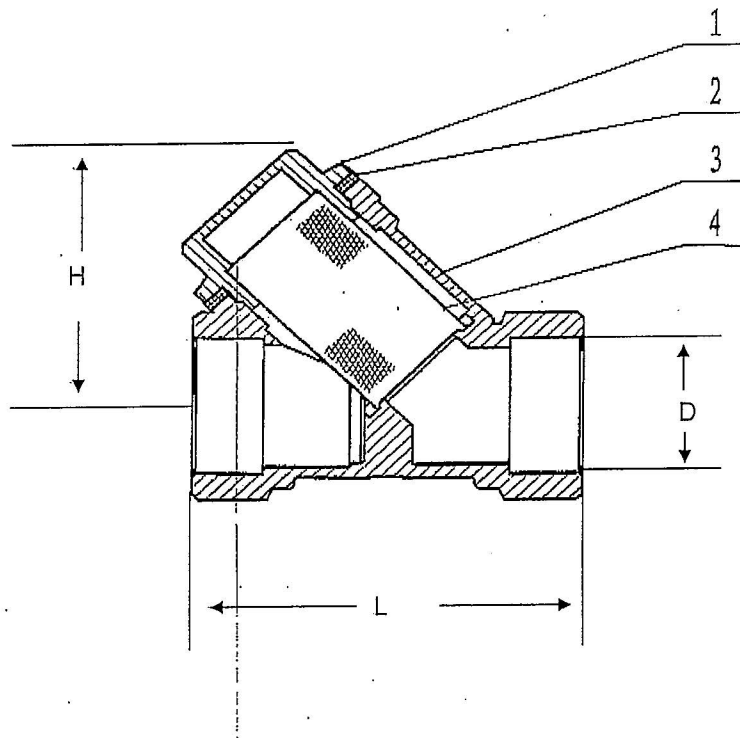
Cap: from 1/4" up to 2" in hot pressed brass

from 2 1/2" up to 4" in casting brass

Sieve in stainless steel AISI 304

The max. working temperature 110°C

working pressure: Max 16bar



4"	181	125		4			
3"	157	103		8			
2 1/2"	146	87		10			
2"	125	69		20			
1 1/2"	105	58		30			
1 1/4"	96	52		36			
1"	75	41		78	4	filter	stainless steel
3/4"	68	38		120	3	body	brass
1/2"	57	31		216	2	sealing gasket	vulcanizing paper
3/8"	46	26		480	1	bonnet	brass
D	L	H		pcs/carton	No.	name	material