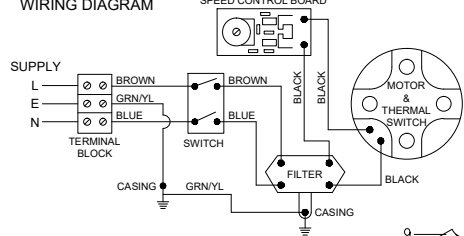
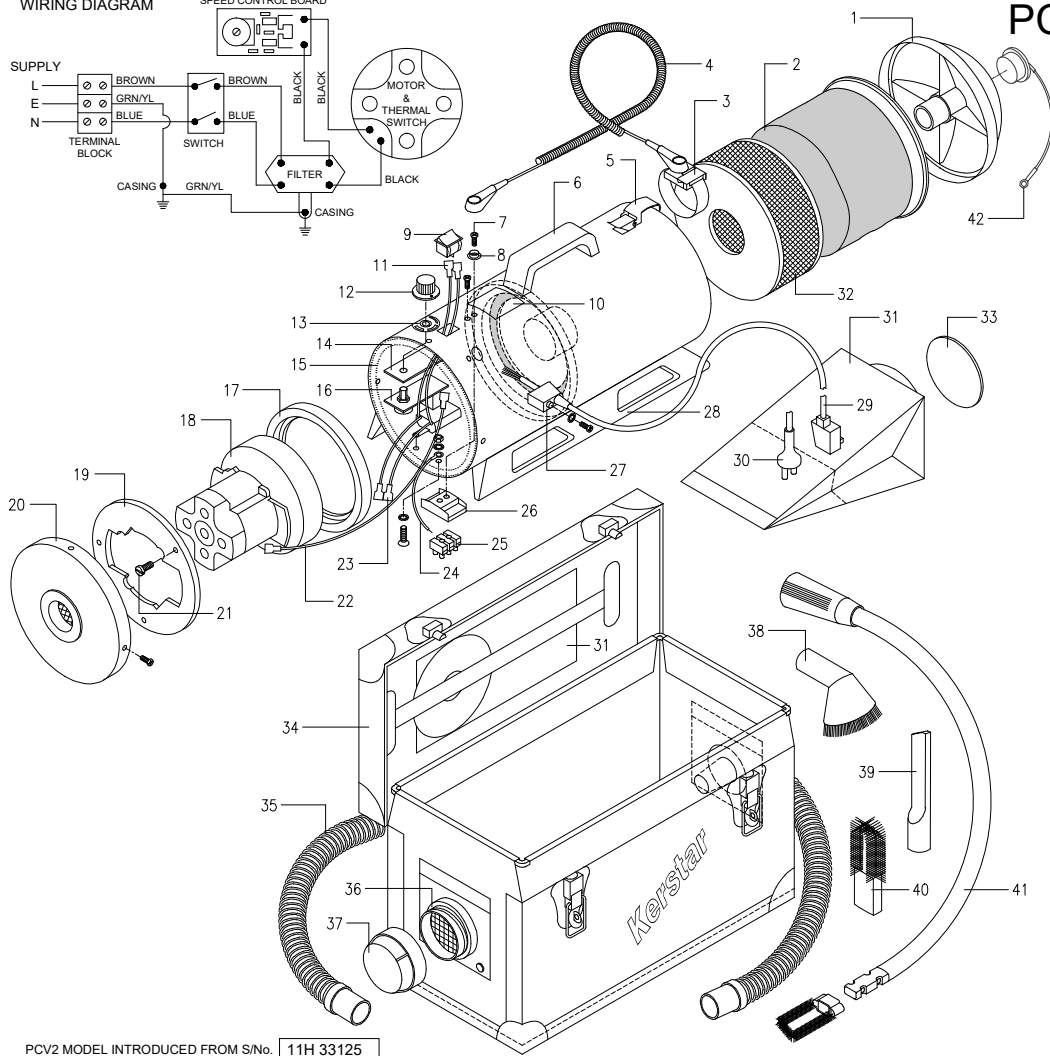


WIRING DIAGRAM



PCV2 PHOTOCOPIER VAC



ITEM No.	QTY	DESCRIPTION
1	1	PCV SUCTION END CAP A/S INC STOPPER & STRAP
2	1	PCV CLOTH BAG
3	1	ELASTICATED A/S WRISTBAND (OPTIONAL EXTRA)
4	1	YELLOW COILY LEAD (OPTIONAL EXTRA)
5	2	CLIP FOR Max, Prima, KV5, 10, 15 & 18
6	1	FLAT SURFACE HANDLE WITH SCREWS & WASHERS
7	2	No6 x 1/2" PAN POZI SELF TAP SCREW
8	1	EARTHING STUD FOR COILY LEAD
9	1	DRY VAC ROCKER SWITCH FOR PCV
10	1	DRY VAC ONLY LABEL
11	1	WIRING LOOM PCV TERMINAL BLOCK TO SWITCH
12	1	KNOB FOR SPEED CONTROL
13	1	MIN/MAX LABEL
14	1	INSULATION BARRIER FOR SPEED CONTROL
15	1	FOAM SILENCING PCV
16	1	SPEED CONTROL BOARD
17	1	MOTOR MOUNTING RING PVC
18	1	MOTOR DIRECT AIRFLOW FOR PCV 230V 11/2015 ONWARD
19	1	PCV MOTOR RETENTION PLATE MK2
20	1	PCV EXHAUST END CAP
21	3	M5 x 30 PAN POZI SCREW
22	1	CONNECTING LEAD PCV SPEED CONTROL TO MOTOR
23	1	PCV FILTER 230V M1
24	1	EARTH LEAD 270mm
25	1	TERMINAL BLOCK 3 WAY
26	1	TERMINAL BLOCK HOLDER
27	1	CABLE CLAMP INC SCREW & GROMMET
28	2	SKID
29	1	CABLE/PLUG PACK 5M x 0.75mm 3 CORE WITH UK PLUG
30	1	CABLE/PLUG PACK 5M x 0.75mm 3 CORE WITH EURO PLUG
31	2	PCV PAPER BAG
32	1	PCV2 HEPA FILTER
33	1	SELF ADHESIVE SEALING DISC FOR PAPER BAG
34	1	PCV CASE
35	1	25mm x 2.5M A/S HOSE ASSEMBLY
36	1	EXHAUST BLOWER
37	1	DIFFUSER
38	1	32mm SWIVEL DUSTING BRUSH
39	1	32mm A/S CREVICE TOOL
40	1	BRUSH FOR 32mm CREVICE TOOL
41	1	32mm FLEXICLEAN TOOL INC BRUSH (OPTIONAL EXTRA)
42	1	STOPPER FOR SUCTION END CAP WITH STRAP & FIXINGS

A/S = ANTI-STATIC/CONDUCTIVE

PCV2 MODEL INTRODUCED FROM S/No. 11H 33125  
MOTOR CHANGED 11/2015 FROM S/No. 15L 53222